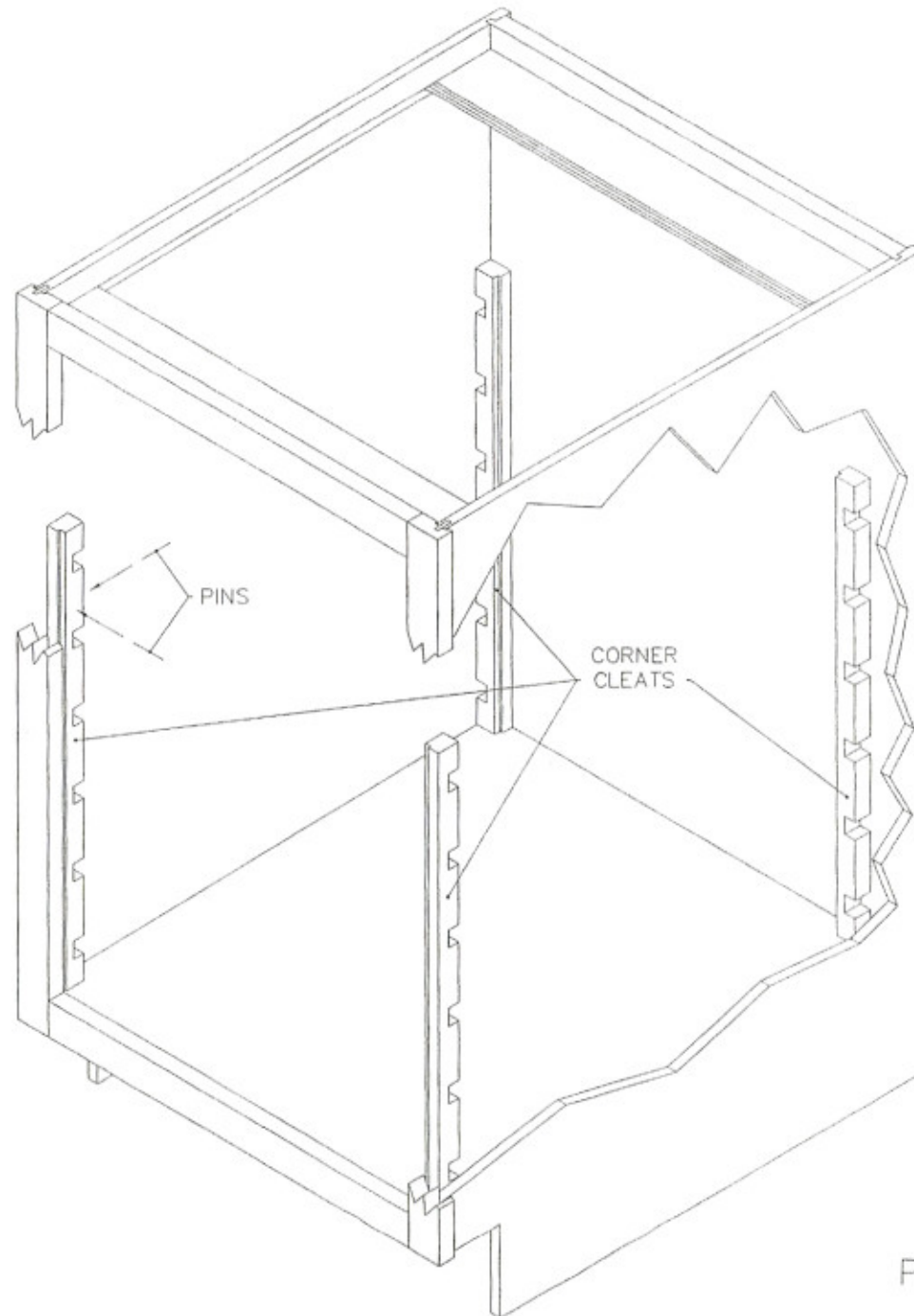
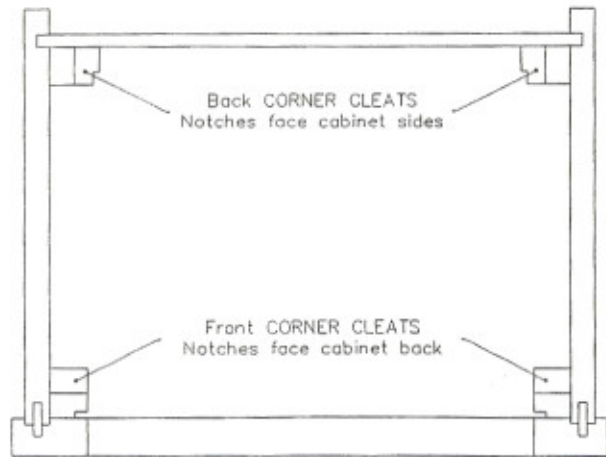


PULL OUT TRAY INSTALLATION

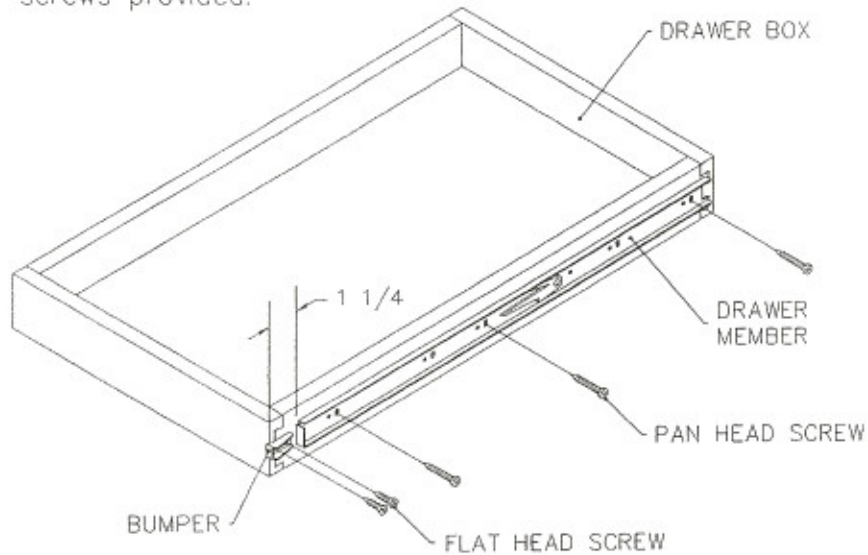
1. Pin CORNER CLEATS in corners of cabinet as shown. All four CORNER CLEATS are machined the same and can be used in any corner; however, orientation when inside the cabinet is critical to the POD system's operation. Corner cleats can be trimmed down if a shelf is used above the pull-out.

Note: For added strength, cleats can be glued or screwed (screws not supplied) in place.

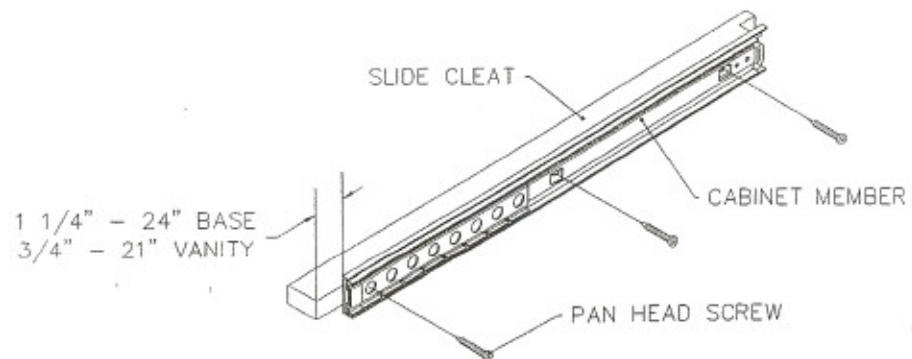


PULL-OUT TRAY INSTALLATION (cont)

2. Mount DRAWER MEMBER to DRAWER BOX using pan head screws provided. Position front of slide $1\frac{1}{4}$ " from front of DRAWER BOX and center on height of drawer.
3. Mount BUMPERS on two front corners using flat head screws provided.



4. Mount CABINET MEMBER to SLIDE CLEAT using pan head screws provided. Position front of slide $1\frac{1}{4}$ " from front of DRAWER BOX and center on height of SLIDE CLEAT.



5. Place SLIDE CLEATS into notches in CORNER CLEATS. Notched end of SLIDE CLEAT should be installed toward the back of the cabinet.
6. Insert drawer box into cabinet.

